



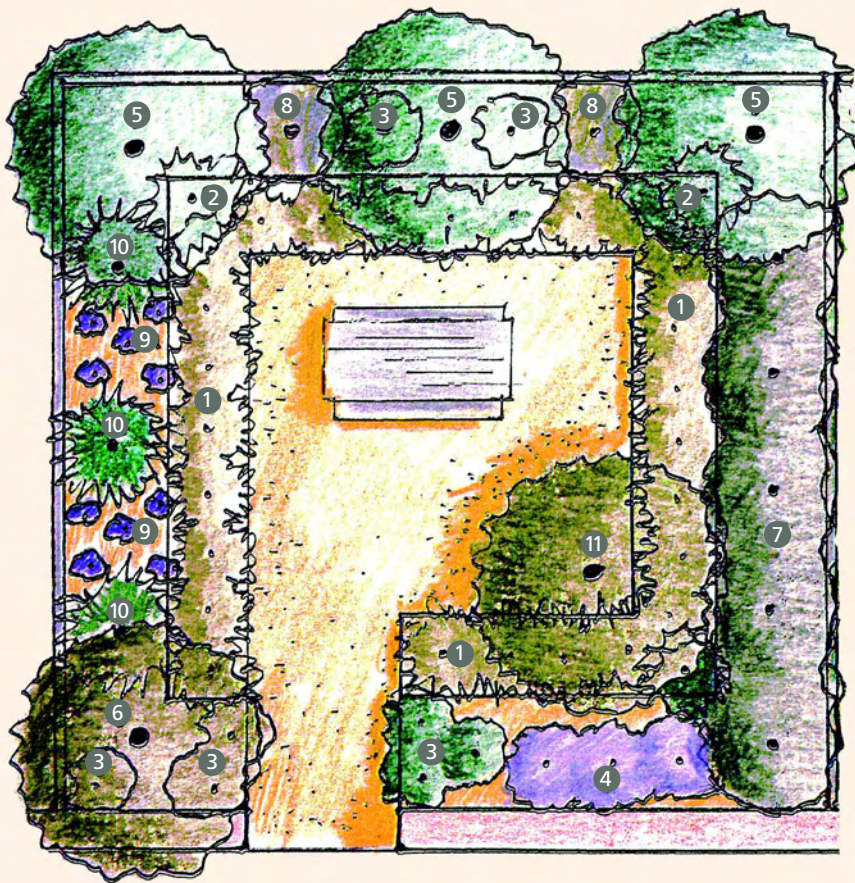
AUSTRALIAN ARID LANDS
BOTANIC GARDEN

MALLEE

GARDEN

Save water, save money, save the planet.
That's AridSmart!

AridSmart
THE FUTURE OF GARDENING



Plant Species

- 1 *Cymbopogon ambiguus*
- 2 *Dianella revoluta*
- 3 *Enchylaena tomentosa*
- 4 *Eremophila arachnoides*
- 5 *Eucalyptus gracilis*
- 6 *Eucalyptus kruseana*
- 7 *Hakea leucoptera*
- 8 *Maireana sedifolia*
- 9 *Olearia* sp
- 10 *Xanthorrhoea* sp
- 11 *Eucalyptus kruseana*

Water Use

AridSmart Mallee Garden
9,760 litres per year (once established)



Average Home Garden (with lawn)
100,000 litres per year



How to create this garden at home

- › Once mature, this garden will have the feel of a small clearing - the mallees will enclose the space but their open habit with many trunks will allow glimpses beyond.
- › Use leaf litter and bark mulch with gravel and recycled timber to achieve a woodland look.
- › Consider the mature heights of the understory plants so they will not obscure the beautiful bark and trunks of the mallees.
- › Select plants from mallee communities that form natural layers such as groundcovers, grasses, shrub layers and the dominant tree canopy layer of the mallee.
- › Add a sub-surface watering system just below the mulch. It can be used to establish the plantings and to supplement rainfall during extended dry periods.